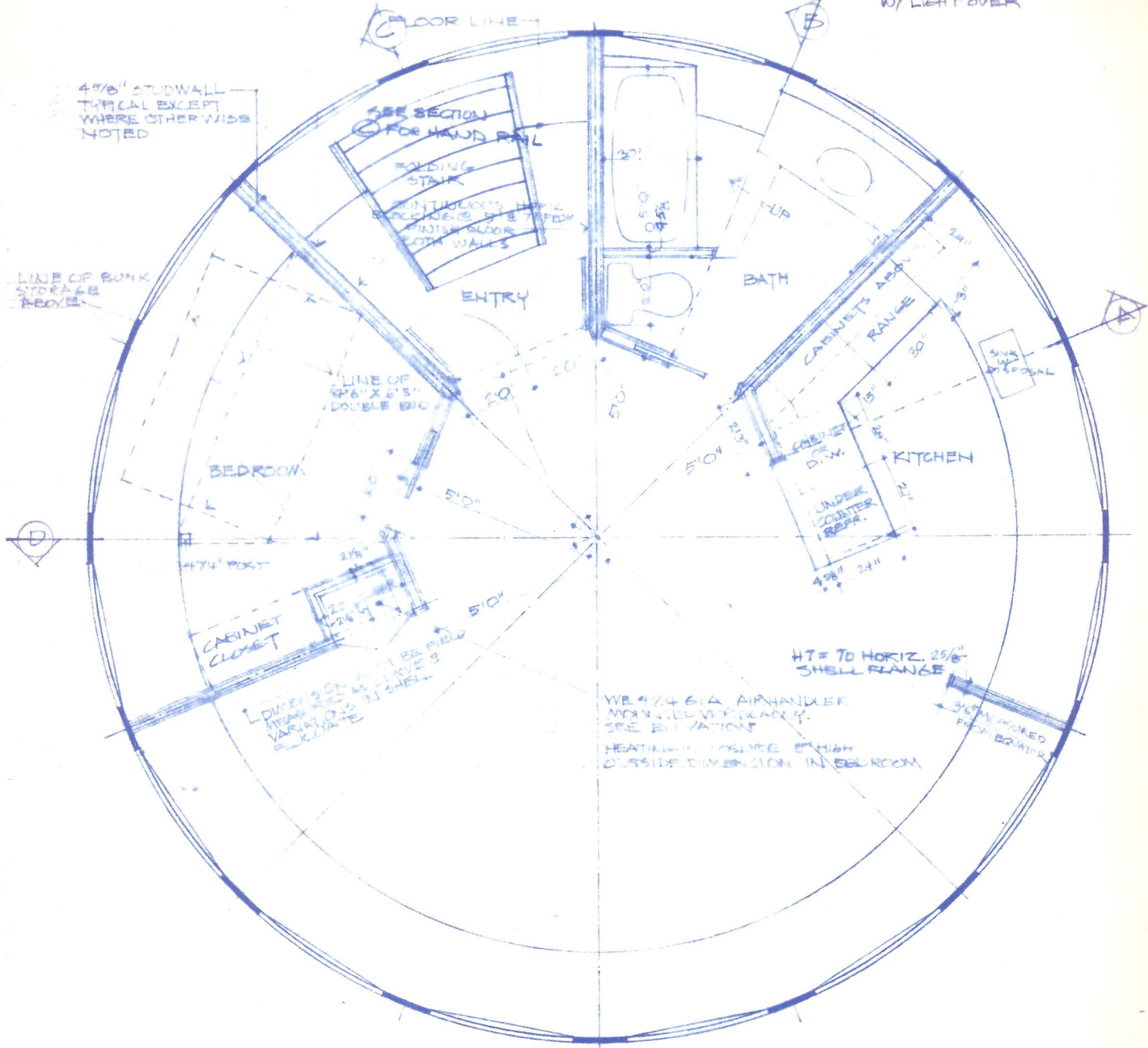
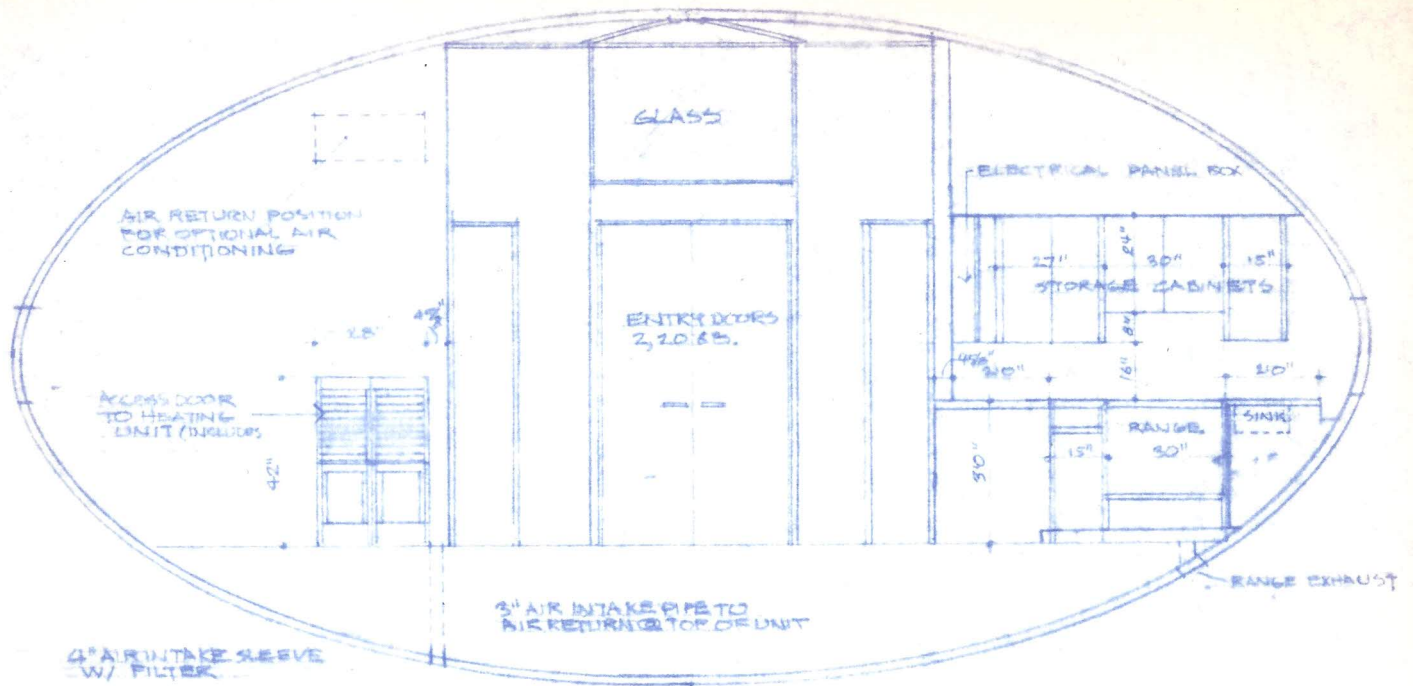


OPENING TO BUNK-STORAGE  
SPACE ABOVE BEDROOM  
SEE SECTION C

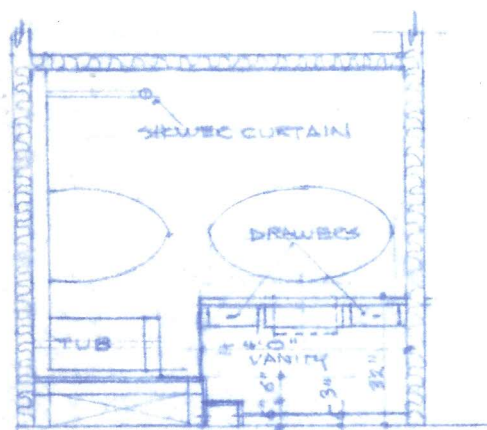
1/4" PLATE GLASS  
MIRROR ON SIDE WALL  
W/ LIGHT OVER



PLAN  
1/4" = 1' 0"

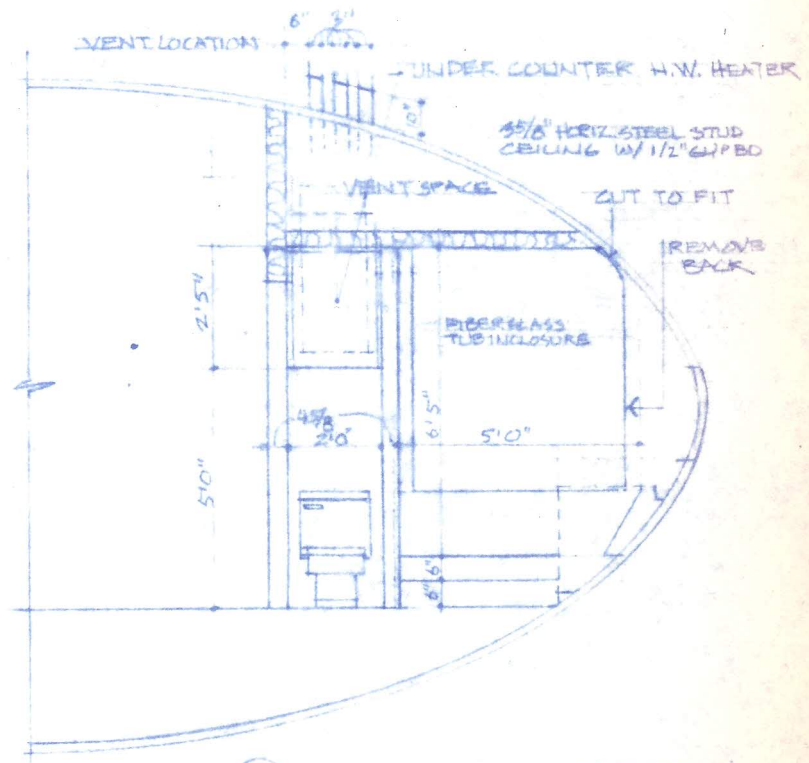


(A) INTERIOR ELEVATION  
1/4" = 1' 0"

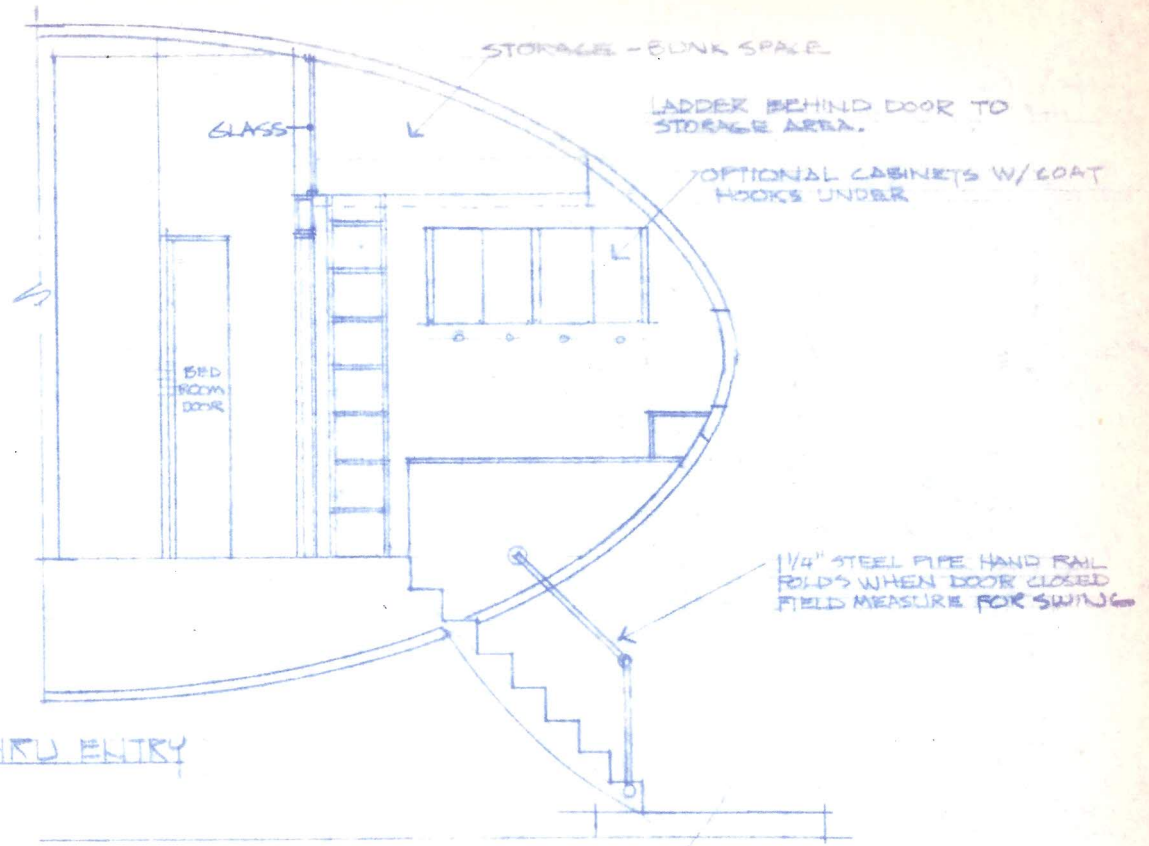


2x4 @ 16" PL WOOD FRAME FOR TUB PLATFORM & STAIR.

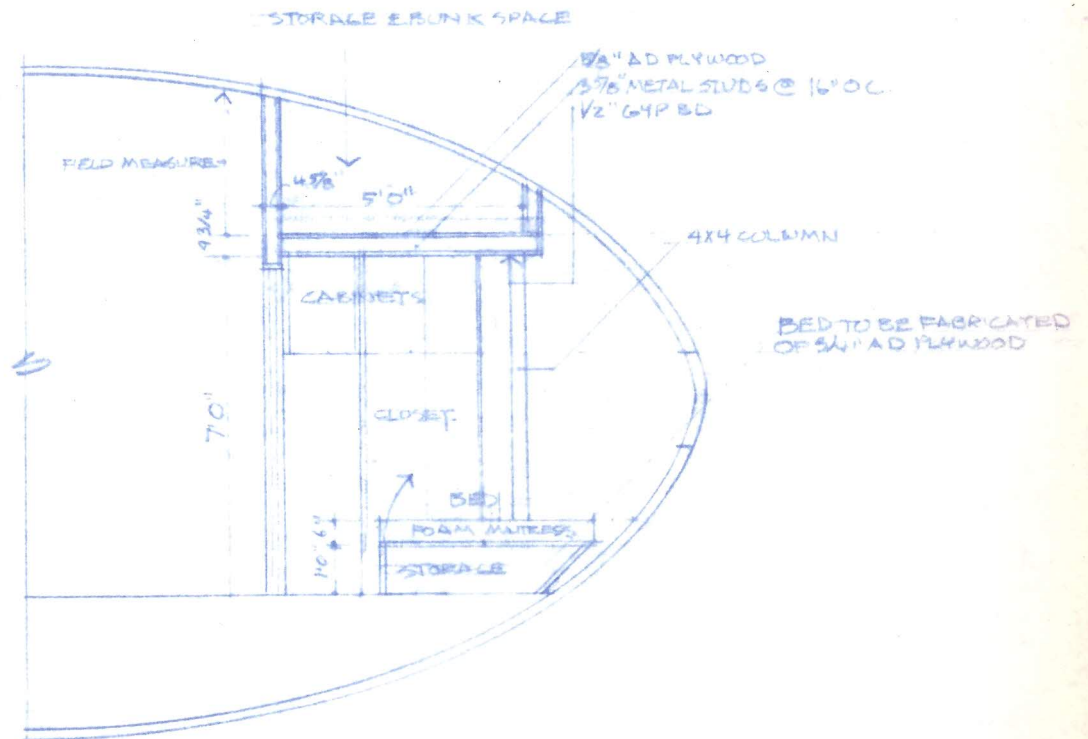
SECTION THRU BATHROOM.  
1/4" = 1' 0"



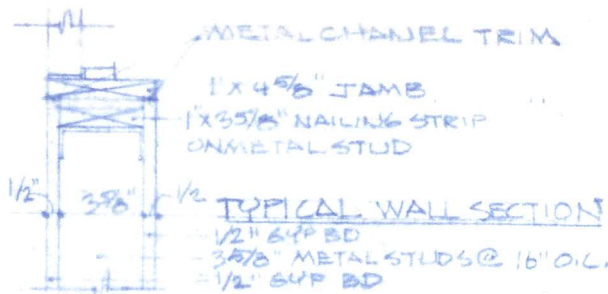
(B) SECTION THRU BATHROOM  
1/4" = 1' 0"



③ SECTION THRU ENTRY  
1/4" = 1'0"



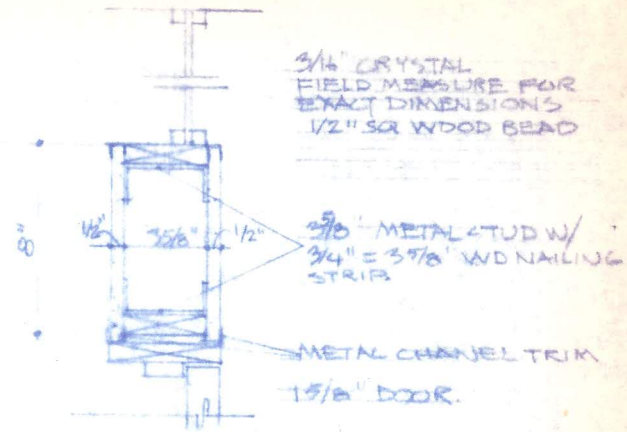
④ SECTION THRU BEDROOM  
1/4" = 1'0"



HEAD & OUTSIDE JAMB DETAIL OF BEDROOM & BATH POCKET DOORS.

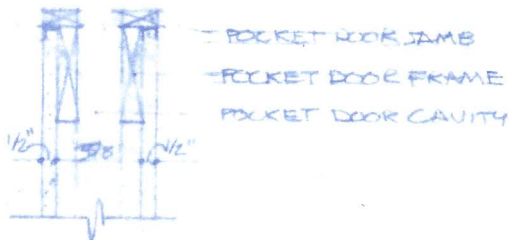
JAMB DETAIL OF DOUBLE DOOR @ ENTRY.

1/2" = 1' 0"



HEAD & WINDOW DETAIL OF DOUBLE DOOR @ ENTRY.

1/2" = 1' 0"



INSIDE JAMB DETAIL OF BED ROOM & BATH POCKET DOORS

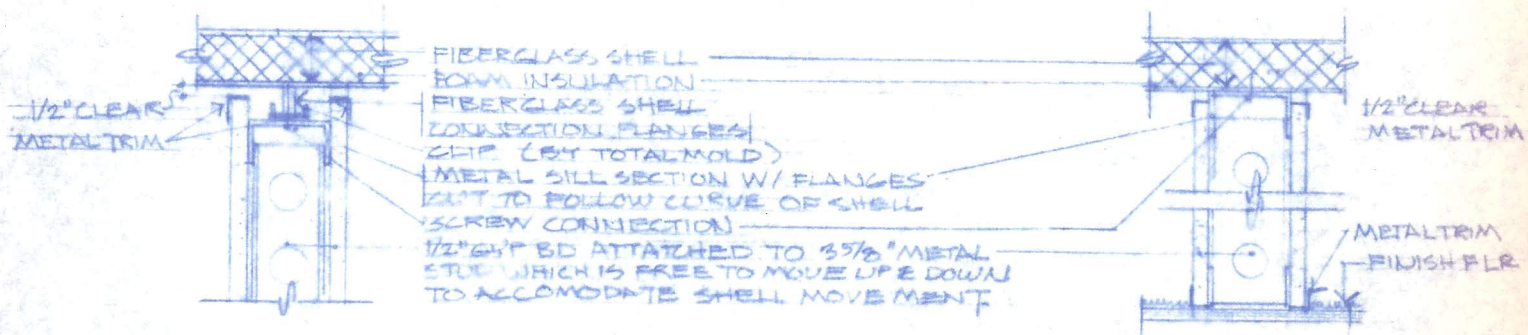
1/2" = 1' 0"

NOTE: BEDROOM & BATH ROOM DOORS

= 1 5/8" X 2' 0" X 16' 0" SOLID CORE BIRCH FACE  
 ROUGH OPENING = 25 1/2" X 6' 10"

ENTRY DOORS

= 1 5/8" X 20 X 68 SOLID CORE BIRCH FACE  
 ROUGH OPENING = 50" X 6' 10"



WALL CONNECTION TO CEILING DETAIL (@ RIB)

1/2" = 1' 0"

WALL CONNECTION TO CEILING & TYPICAL SILL DETAIL

1/2" =

3 WIRE  
120/240VOLT  
METER

4 1/2" STUD WALL  
TYPICAL EXCEPT  
WHERE OTHERWISE  
NOTED



# ELECTRICAL PLAN 1/4" = 1'-0"

**NOTE:** ELECTRICAL POWER ENTRY TO BE IN UTILITY CORE @ CENTER OF HOUSE  
 RANGE, HEATING UNIT 1 50A CIRCUIT EA.  
 DISP. DISHWASHER 1 20A CIRCUIT EA.  
 1 KITCHEN SMALL APPLIANCE CIRCUIT  
 2 GENERAL CIRCUITS  
 3 SPARE CIRCUITS