

DESIGN STUDIES  
FOR  
FUTURO CORPORATION

FEB. 1970

BY DAVID DECKER

# FUTURO CORPORATION DESIGN STUDIES

## ELLIPSE.

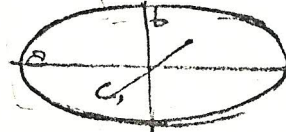
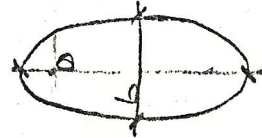
A PLANE CURVE SUCH THAT THE SUM OF THE DISTANCES OF EACH POINT IN ITS PERIPHERY FROM TWO FIXED POINTS, THE FOCI, ARE EQUAL.

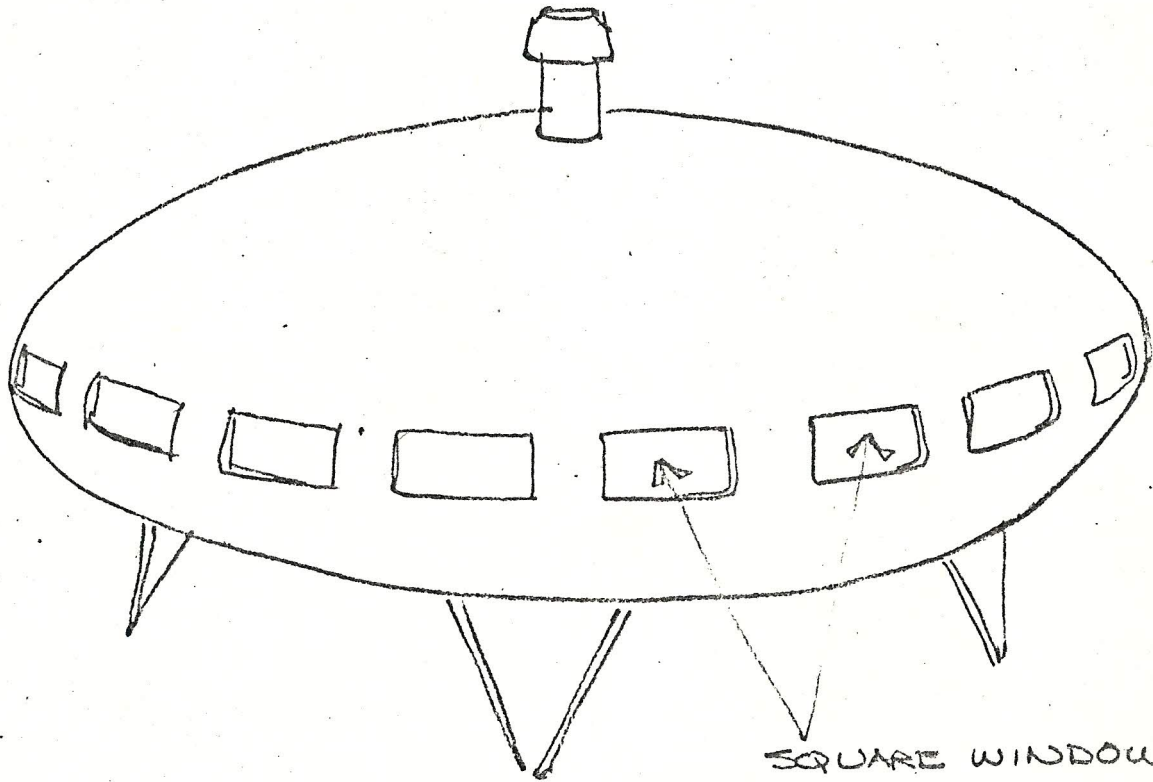
EQUATION  $\frac{x^2}{a^2} + \frac{y^2}{b^2} = 1$

ELLIPSOID  $\frac{x^2}{a^2} + \frac{y^2}{b^2} + \frac{z^2}{c^2} = 1$

AREA. (ELLIPSE) =  $ab(1.78540)$

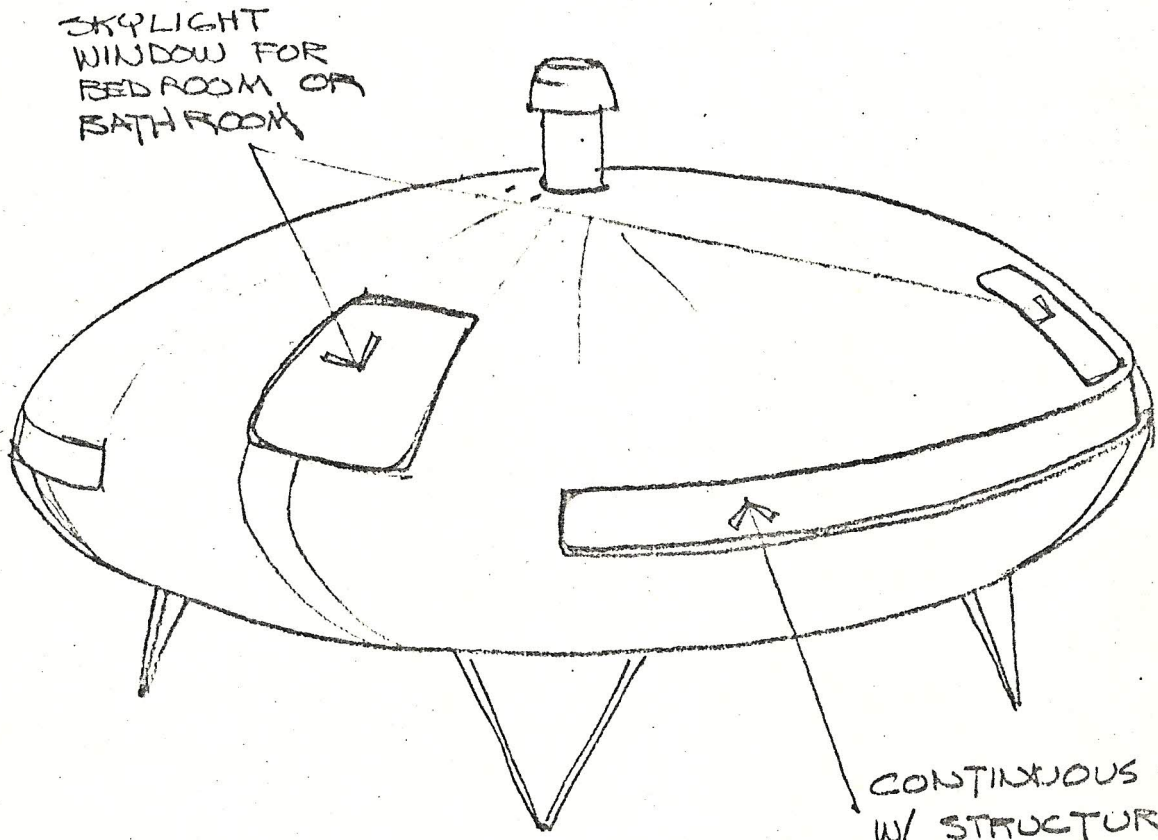
VOLUME (ELLIPSOID) =  $\frac{4}{3} \pi abc$ .





SQUARE WINDOWS

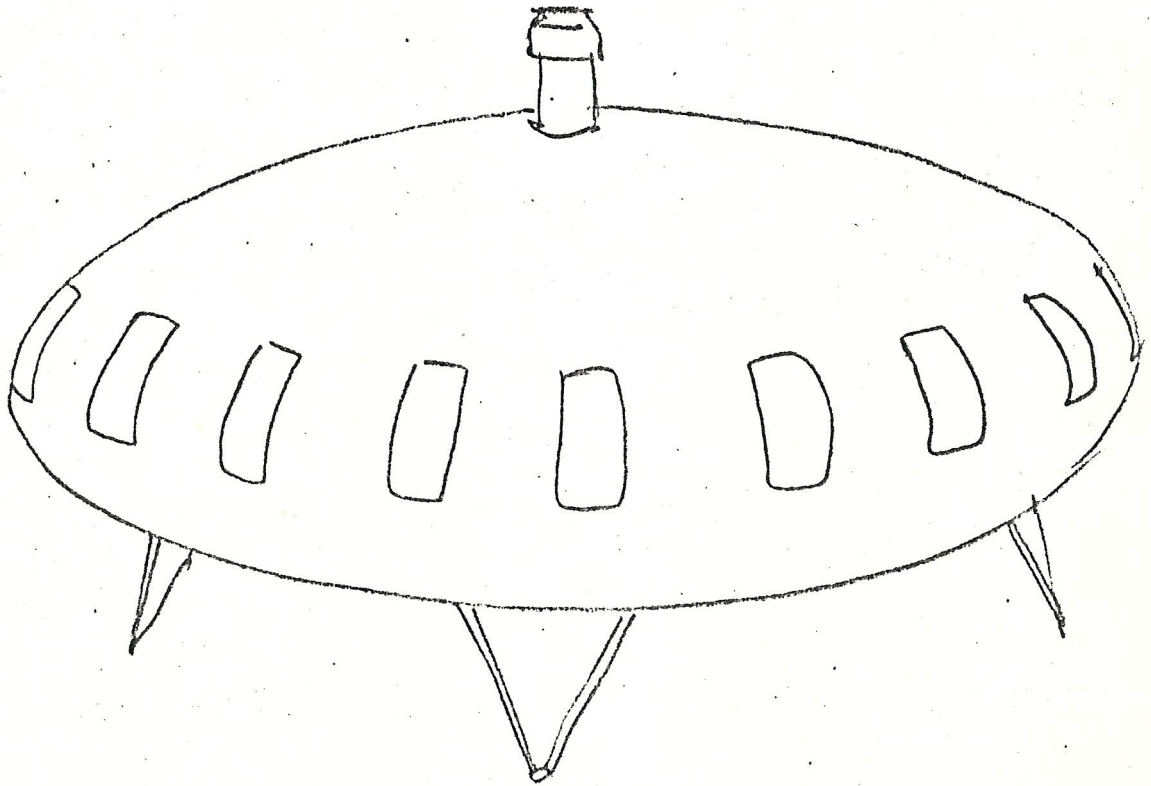
WINDOW STUDY



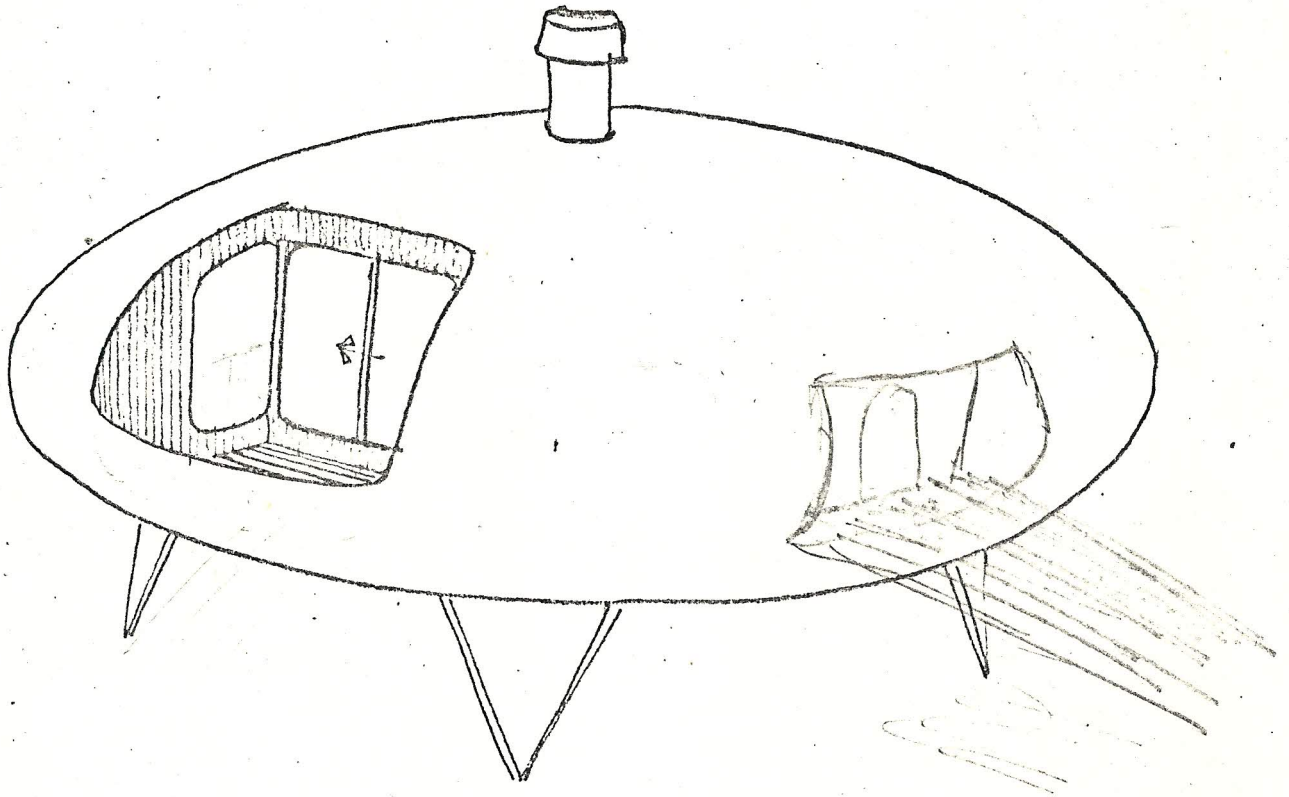
SKYLIGHT  
WINDOW FOR  
BED ROOM OR  
BATH ROOM

CONTINUOUS SLIT  
W/ STRUCTURE INSIDE

WINDOW STUDY  
3



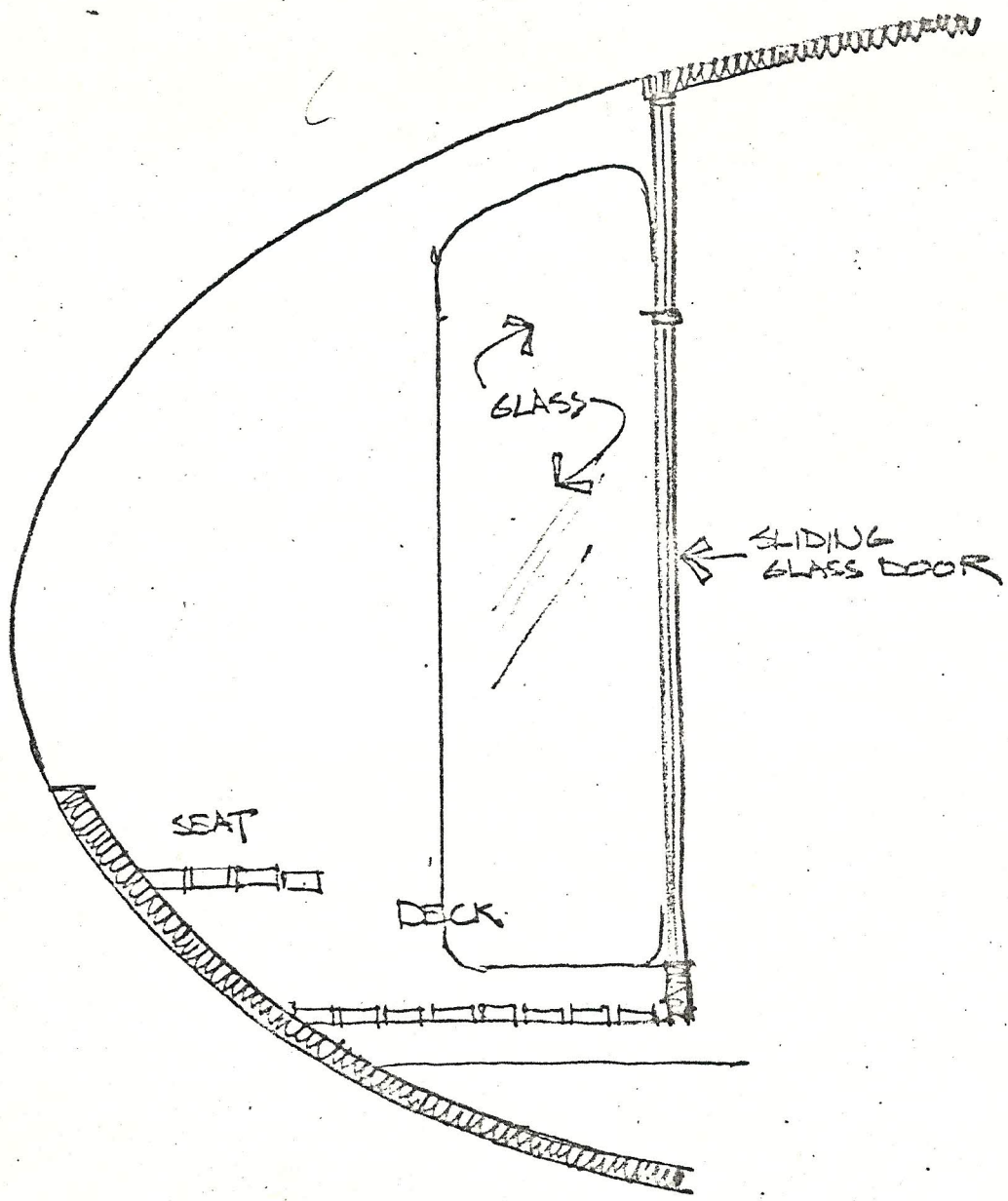
WINDOW STUDY  
4



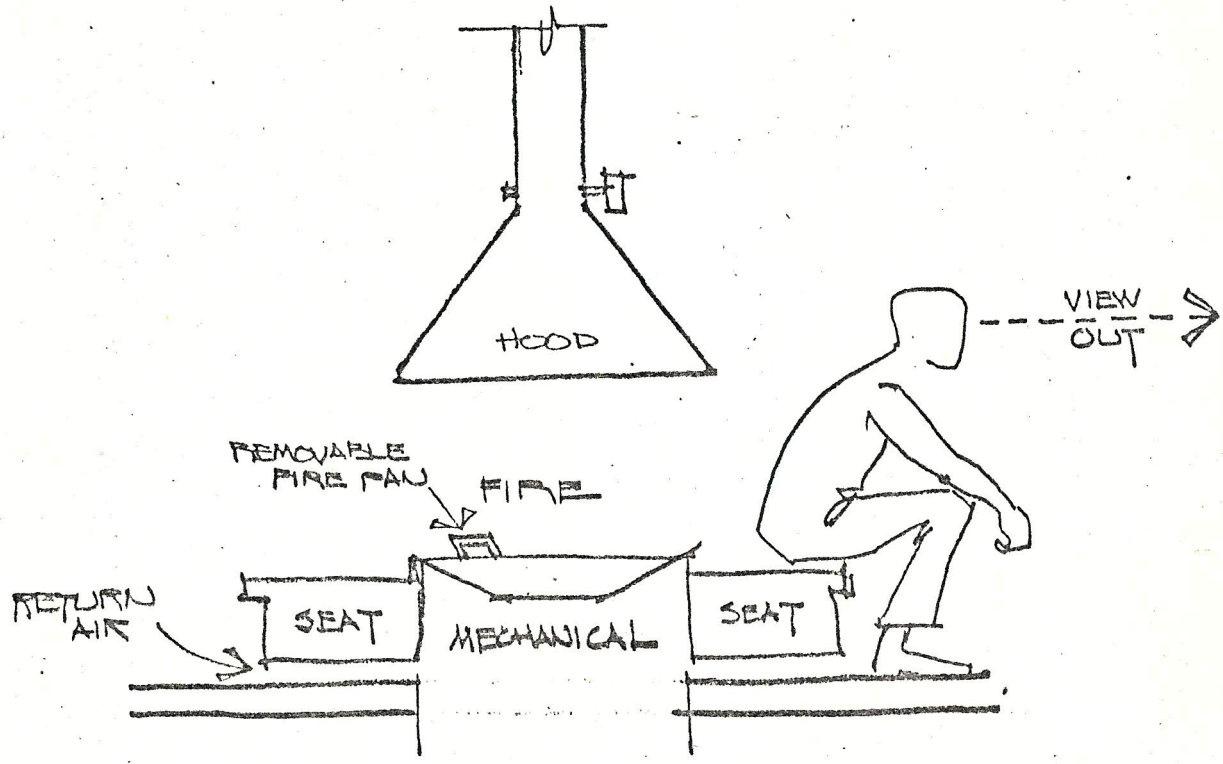
DECK OPENING  
W/ SLIDING GLASS DOORS

DECK STUDY  
5

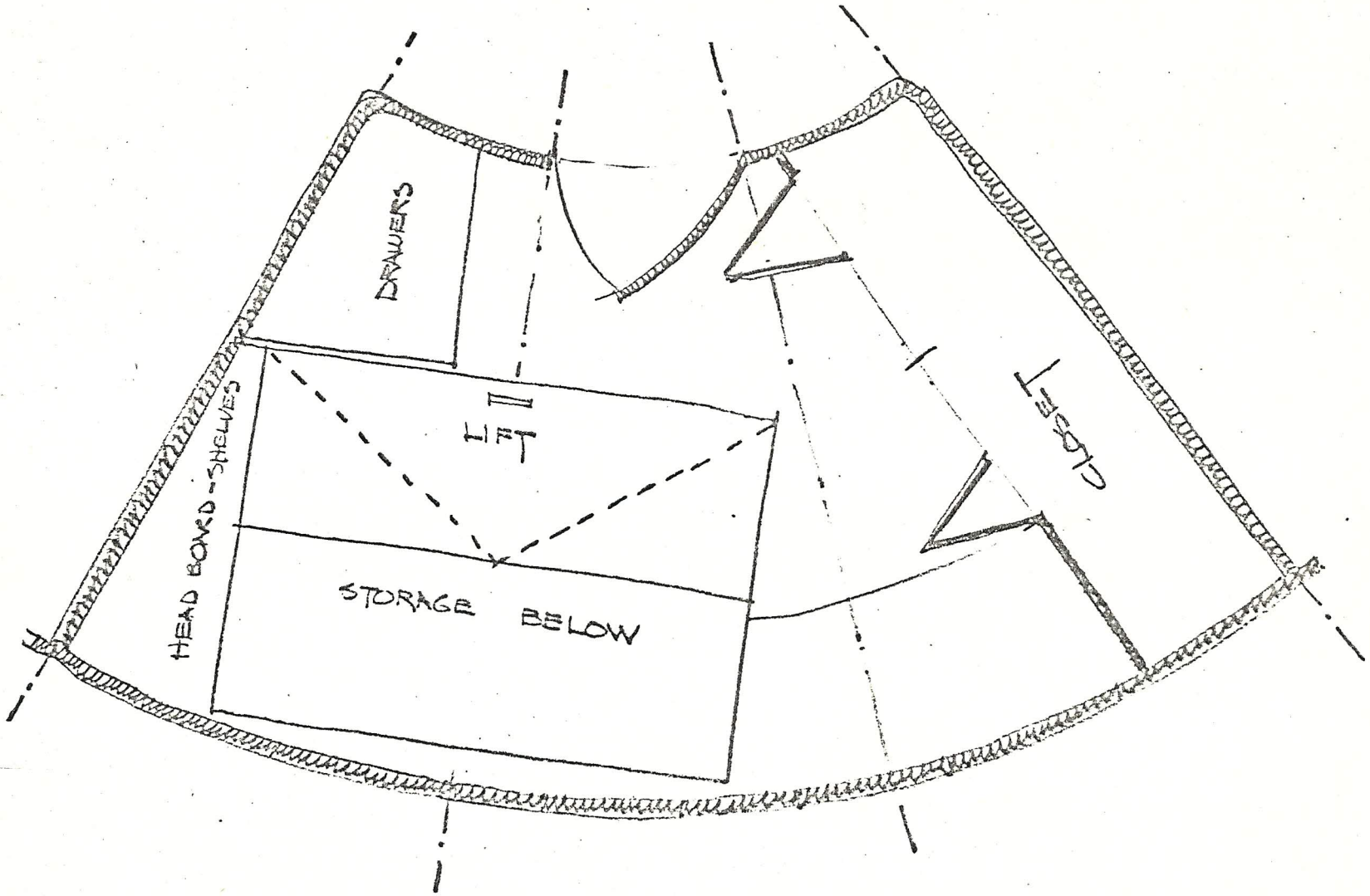




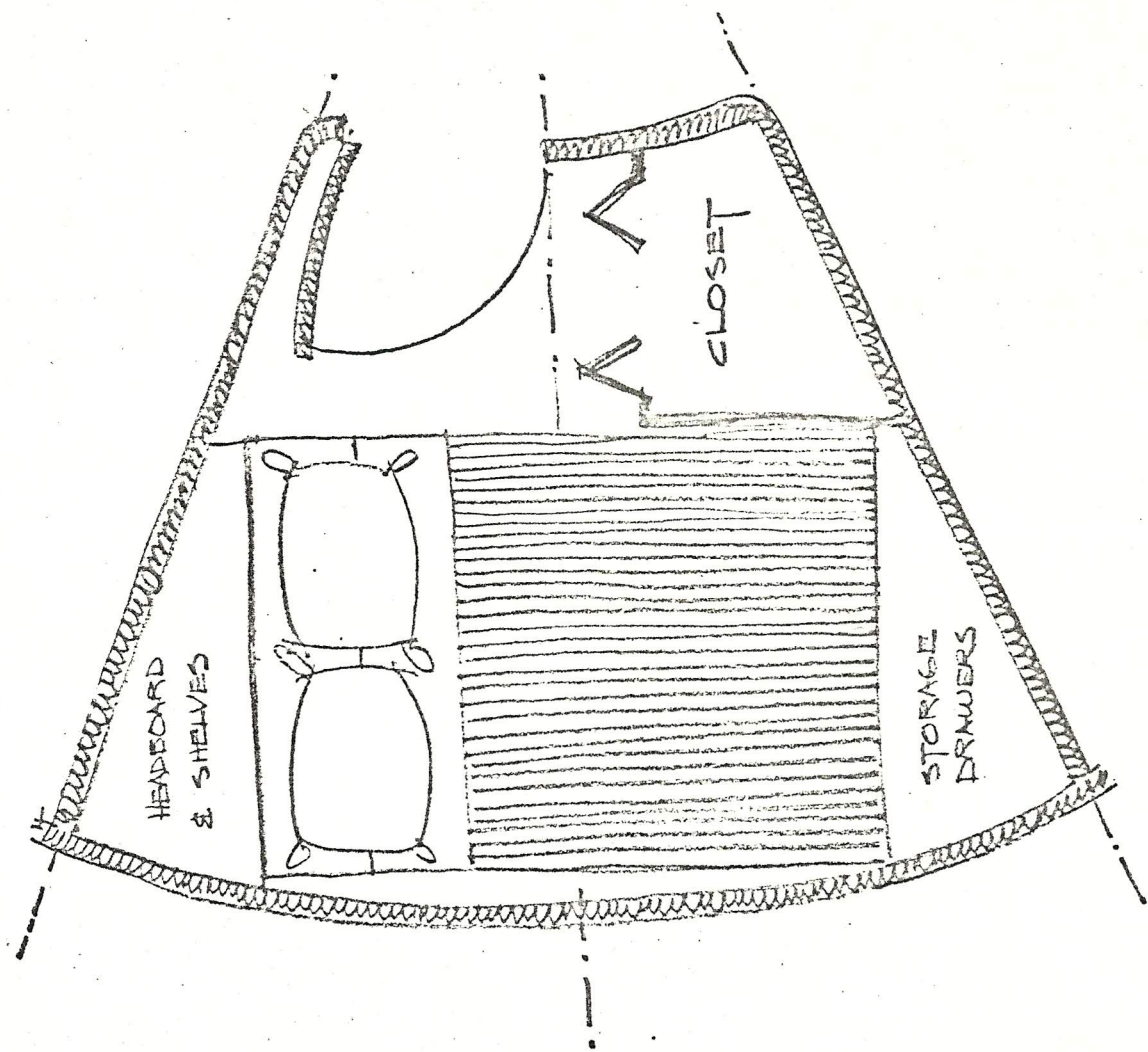
SECTION THROUGH DECK



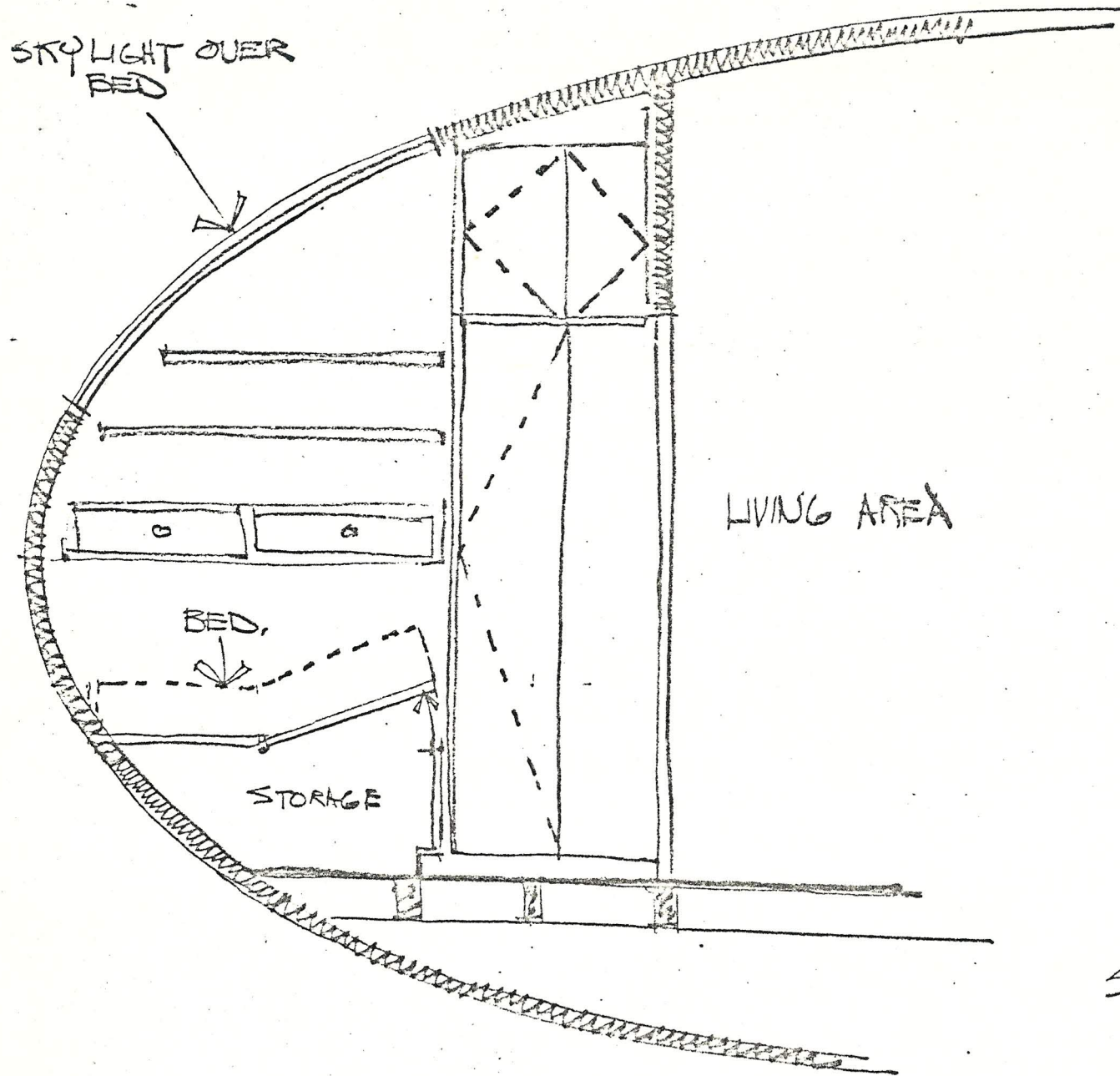




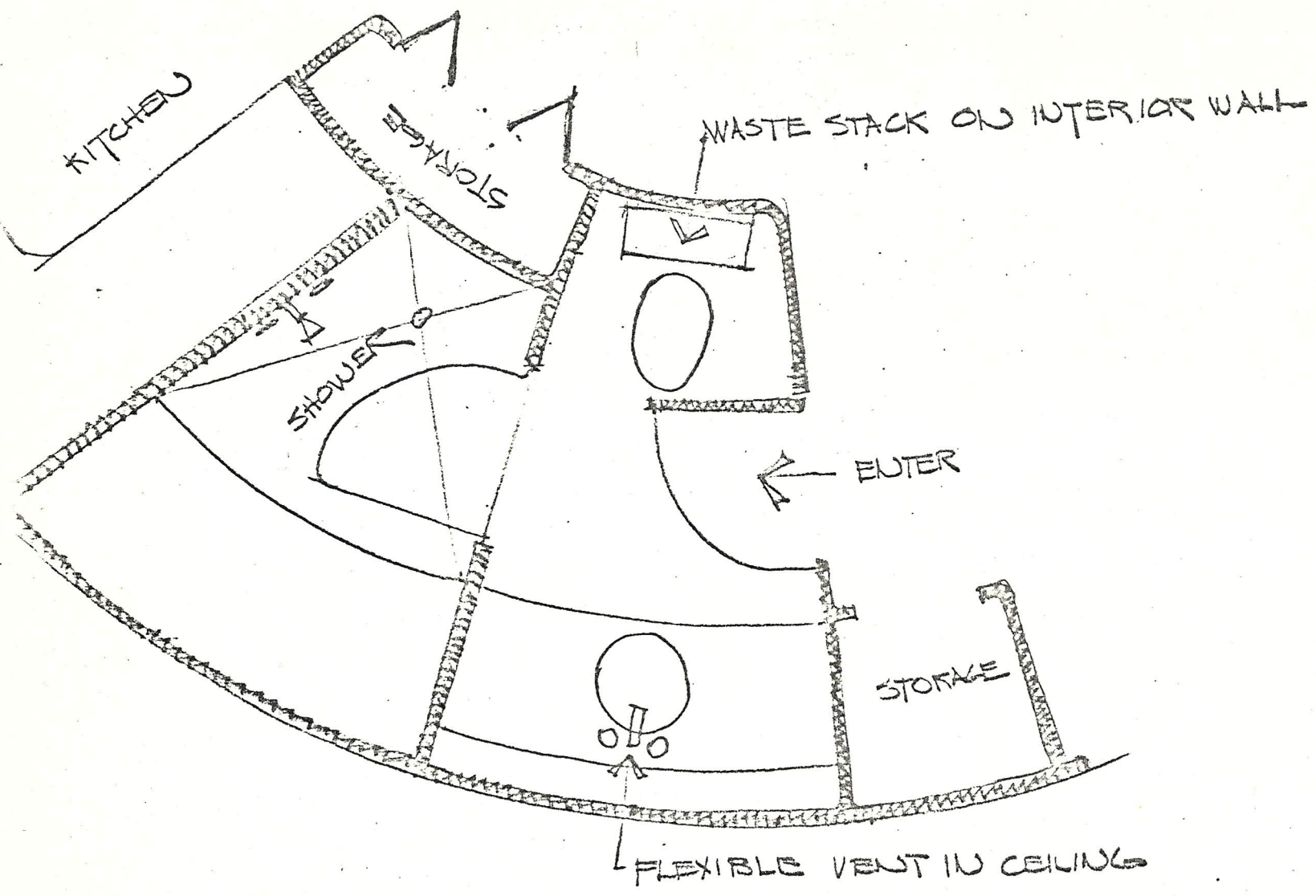
BEDROOM STUDY  
3 BAYS



BEDROOM STUDY  
2 BAYS

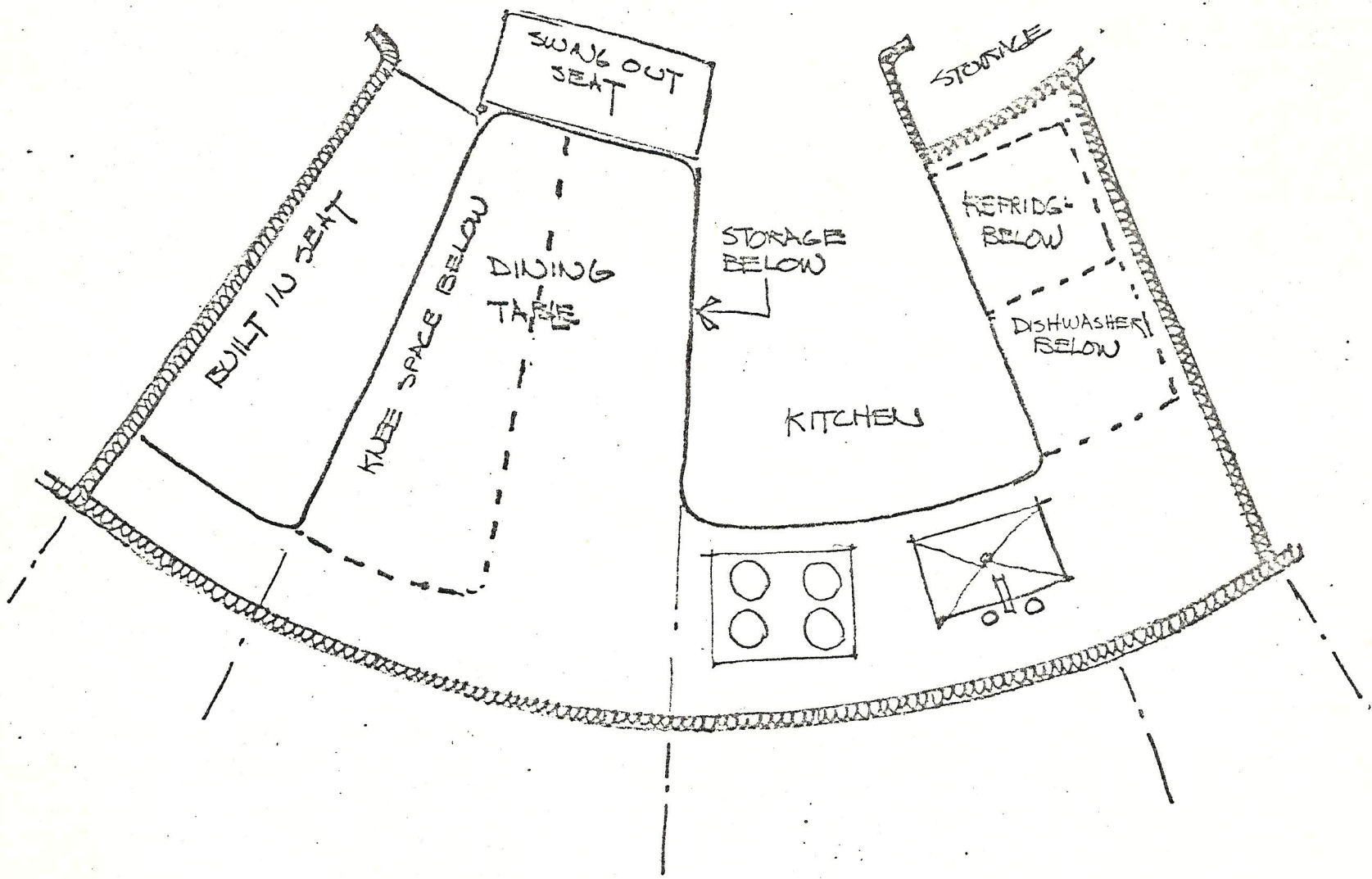


SECTION THROUGH  
BED ROOM



BATHROOM STUDY  
1 1/2 BAYS





KITCHEN & DINING STUDY  
3 BAYS.