

a home for all seasons







## ARCHDOME—The First Home of New Technology

America faces a critical housing shortage. Until the development of the Archdome concept most home building followed practices of the “horse and buggy” era.

In 1932, Fortune Magazine described housing “as the disgrace of American industry.” Some 38 years, 18 congresses and six presidents later, little has changed—until the Archdomes concept.

This concept began when company founders were faced with a long waiting period for hangar space to house their airplane.

Needed was a new approach, using man-made materials, materials that were malleable and would last forever with little upkeep.



LeRoy J. Score, Chairman of the Board.

So they conceived, designed and engineered a new concept. Modern computer technology was used to determine stress and design tolerances. The appearance had to be aesthetically pleasing and the building had to be structurally sound.

The panels had to go together precisely . . . tried and proven fastening and sealing techniques were used to insure a precision finished structure. Here at last was the answer, not just for airplane hangars, but to meet a vast need for better housing.

How would the building crafts accept the Archdome concept? This was a major concern and therefore the developers decided to assemble a display home. They invited contractors, electricians, glaziers, and members of other crafts to assemble the first unit.

The unit was completed in less than a day. No special tools or techniques were required. No elaborate drawings or out-of-the-ordinary skills were needed. The new concept was readily accepted by the workmen.

This first unit was assembled in a small Northwestern city. The reaction was overwhelming. The developers planned for a crowd of 300

—4,000 came. And even more significant, the response from young and old was enthusiastic.

Archdomes, Inc.—a new concept—a blend of computer application and modern man-made materials—is the breakthrough to bring about comfortable, expandable, permanent and attractive housing for all people and all seasons.



William E. Cawley, President.  
Right: James L. Pike, Corp. Staff Engineer.



The Archdome Concept is a major breakthrough in home building technology. It **had** to happen. And now it has... a comfortable, expandable home that you can erect in one day.

A permanent and attractive home at less cost than conventional structures. A home which reflects space age innovation and the application of computer sciences, a home in which human engineering was the first consideration.

## The wonderful feeling of living in the home of tomorrow — TODAY

The new Archdome Concept in building systems is truly unique. Its building-block modular approach allows you to create a personalized home which you can tailor to your own living needs. You can easily vary the size of every room. Arrange the interior walls to suit your tastes. Begin with a simple modular arrangement—add new Archdome building blocks as your needs change. No longer is your living environment restricted by conventional, out-moded home building methods. Your home is contemporary—it will stay contemporary through the years.

Your first visit to this home of the future is an experience you'll not soon forget. The beamless interior surrounds you with a feeling of unlimited living space. The unsupported Ceilingwalls™ soar over you, creating a unique cathedral-like atmosphere. The flexible floor plans do away with impractical, unused corners—corners that serve only to collect little used end tables, lamps and dust.

The Archdomes Concept allows you to utilize every inch of living space to your best advantage. You select from a wide variety of standard home fixtures. No special considerations are required in the construction or assembly of your home. Your dealer will provide you with a full selection of arrangements, colors and sizes.

## Finishing the interior is half the fun

The interior of the Ceilingwalls is a warm, softly textured off-white color. Color accents are easily applied using standard interior wall finishes. The surface is practically indestructible. There will never be a need to refinish or touch up your Ceilingwalls. To hang pictures, lamps, or whatever, you only need a screwdriver and sheet metal screws... it's that simple.

Because the Ceilingwalls are completely self supporting, all interior walls carry no load. You can move them about—changing your living arrangements to suit your mood. Rearranging your house is almost as easy as rearranging your furniture.

Here's another tip to the decorator. You may decide you want to add an extra door or a window to your home. Your dealer will supply a new Ceilingwall unit and can help in selecting the window or door that pleases your fancy. Ceilingwall segments are easily removed and the new unit inserted in its place.

As we said, finishing the interior **is half the fun**.

## Up in no time at all

You begin assembly of your home by putting down a foundation of concrete or standard wood subflooring. Ceilingwall units simply bolt to the foundation and to each other. Your dealer can give you helpful hints if you plan to do the work. Or he can prepare estimates if you want to have him put up the structure. You plan the construction of your home.

All fittings for utilities are standard and designed into the assembly plan. No special tools or techniques required.

Each Ceilingwall unit provides 50 square feet of living space. You may plan your home using several basic configurations.



**Versatile...flexible...comfortable. Y**

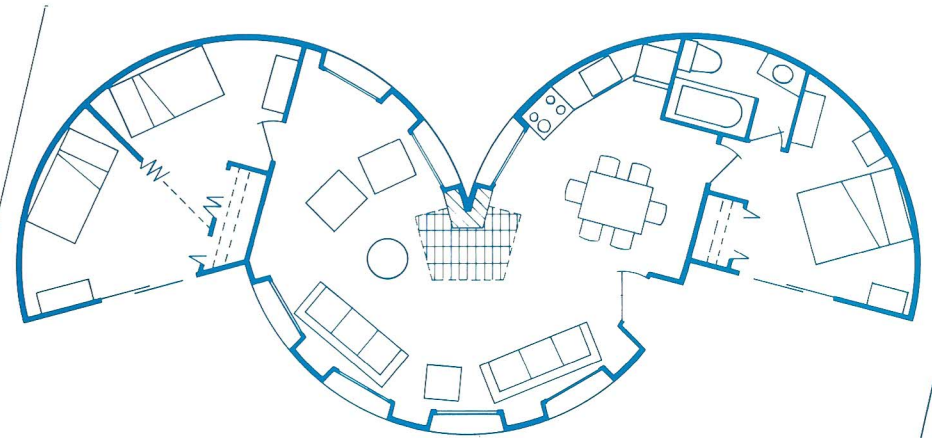
The Ceilingwalls are fabricated of polyurethane filler laminated inside and out with several layers of tough fiberglass. An additional application of Gel-coat to the exterior provides a durable weather-proof surface. Ceilingwalls are guaranteed to last for years and years and years.

### **A friendly word about costs**

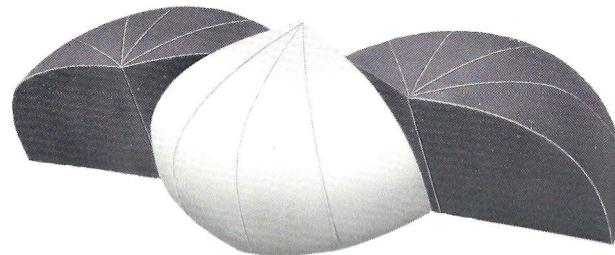
Not the least of the advantages created by the Archdomes Concept is the **COST OF PURCHASE AND ASSEMBLY OF YOUR CUSTOMIZED HOME.**

The savings inherent in a modular home can really be appreciated when you compare the cost of conventional structures. Your nearby dealer has all the materials, specifications and general information needed to estimate the cost of your personal design. Remember, all fixtures are standard. No special tools or techniques are needed to assemble the unit. The most important saving of all perhaps is the full utilization of all living space made possible by the Archdomes Concept.

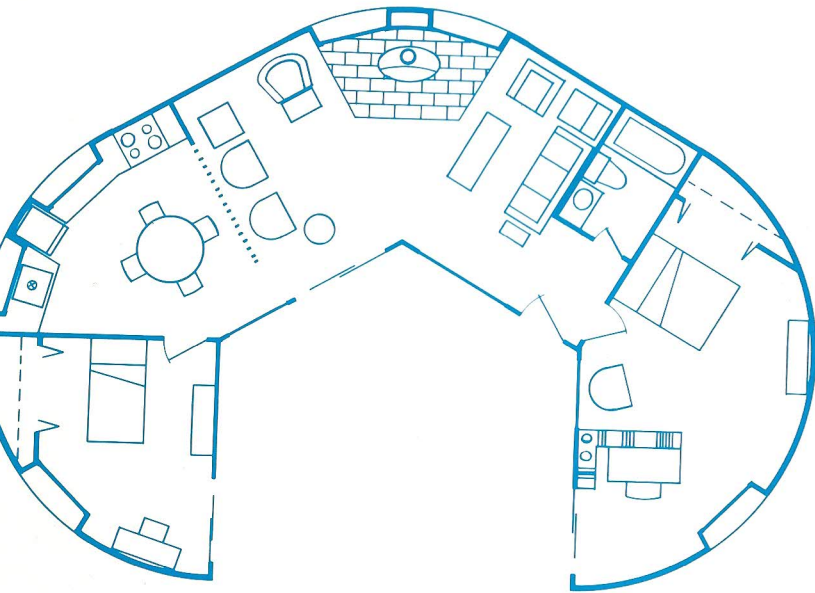
Your dealer can also help you in arranging convenient and practical financing for your new home.



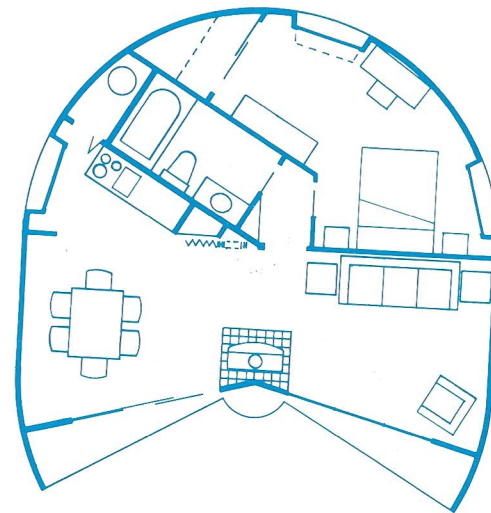
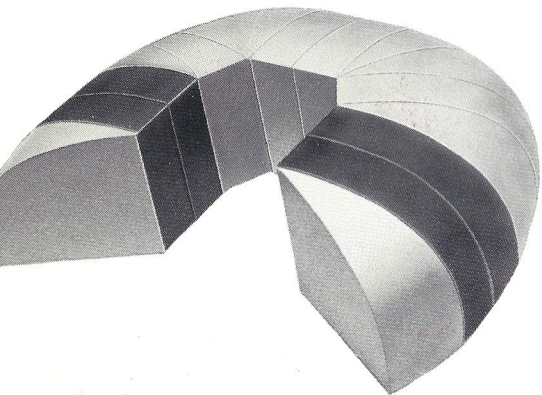
**An interesting design divided into four environmental spaces.**



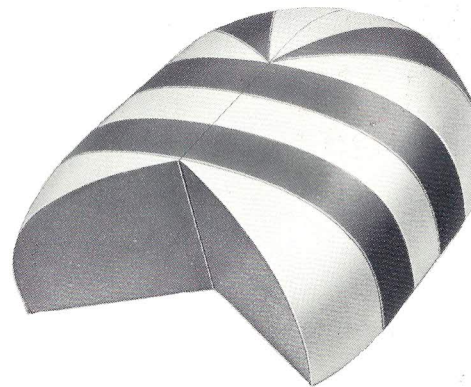
# Our home can be planned in an almost endless variety of living arrangements.



Select a patio area and surround it with open, comfortable living.



How to make a relatively small living area live like a big one.







**It's different. It's unique. And it grows and grows and grows. You can erect this prefabricated home in less than one day!**